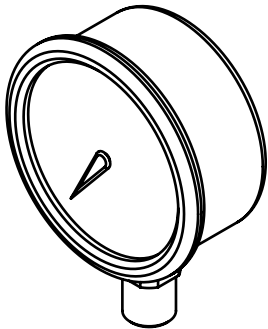
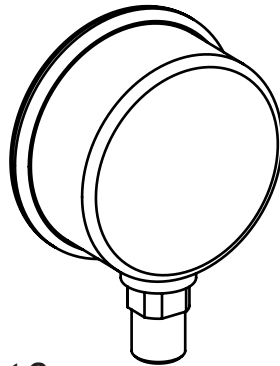


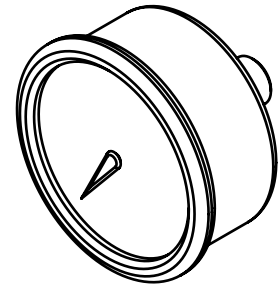
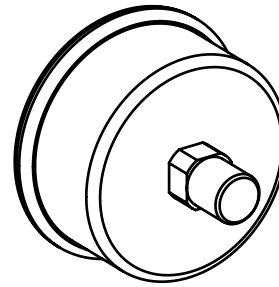
Liquid Filled Pressure Gauges



“BM” Bottom Mount Gauge



“RM” Rear Mount Gauge



DESCRIPTION:

Glycerin filled pressure gages allow accurate psid monitoring for flow adjustment of separators and recovery tanks. These gauges are suitable for environments compatible with copper alloy wetted parts where vibration or pressure pulsation occur and for gaseous or liquid media that will not obstruct the pressure system.

| SPECIFICATIONS | | | | | | |
|----------------|----------------|------------|----------------|-----------------|----------------|--|
| MODEL | PRESSURE RANGE | GAUGE DIA. | MOUNTING/SIZE | MATERIAL | | OPERATING TEMPERATURE |
| | | | | GAUGE | THD. MTG. STEM | |
| RM-60 | 0-60 PSI | 2-1/2" | REAR 1/4"NPT | STAINLESS STEEL | BRASS | AMBIENT: -40°F TO 160°F (-40°C TO 71°C) MEDIA: max. 140°F (+60°C) (TEMP. RANGE -4°F TO 140°F) |
| RM-160 | 0-160 PSI | | | | | |
| BM-60 | 0-60 PSI | | BOTTOM 1/4"NPT | | | |
| BM-160 | 0-160 PSI | | | | | |

STANDARD MATERIALS:

Connection: copper alloy

Movement: copper alloy

O-Ring: EPDM

Window: Polycarbonate

Bourdon Tube: copper alloy

Case: 304 stainless steel

Window Gasket: Buna-N

Case Filling: glycerin

